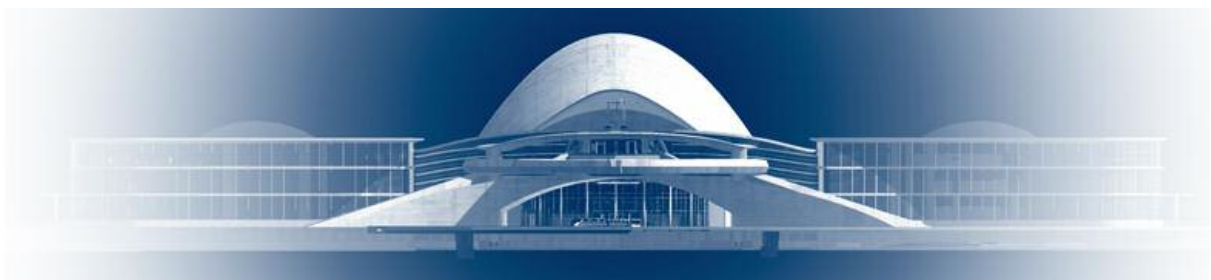


PROJECT

# *Orpheus*



## Executive Summary

by Dominique Julliard, Alain Amouyal, Chantal Desmoulins  
Partners in Silcord US Productions for Orpheus Project



*OCTOBER 2011*

# The Orpheus Center and Experience

*A bold, progressive endeavor to awe,  
inspire, and heal people around the world*



## The Orpheus Center

The most beautiful place ever built for healing people with art and music !  
The most spectacular site ever envisioned as an international Healing Center  
that blends music and performing arts, medical sciences, and modern technology



# INTRODUCTION

*The Orpheus Project comprises the extraordinary Orpheus Center and the cathartic Orpheus Experience.*

Inspired by the Greek musician and poet, Orpheus, the Orpheus Project emulates the legendary healing venues of ancient Greece — where cathartic theatrical “spectacles” were staged in magnificent amphitheaters connected with highly developed healthcare centers.

## The Orpheus Center incorporates ...

- a magnificent, multi-level complex comprising a 3,000-seat multimedia amphitheater
- a vast healthcare and resource center with a 4,500-person capacity
- onsite accommodation and catering facilities to accommodate 3,500 people
- abundant services to ensure a pleasant, curative stay for the desired length of time

## The Orpheus Experience involves ...

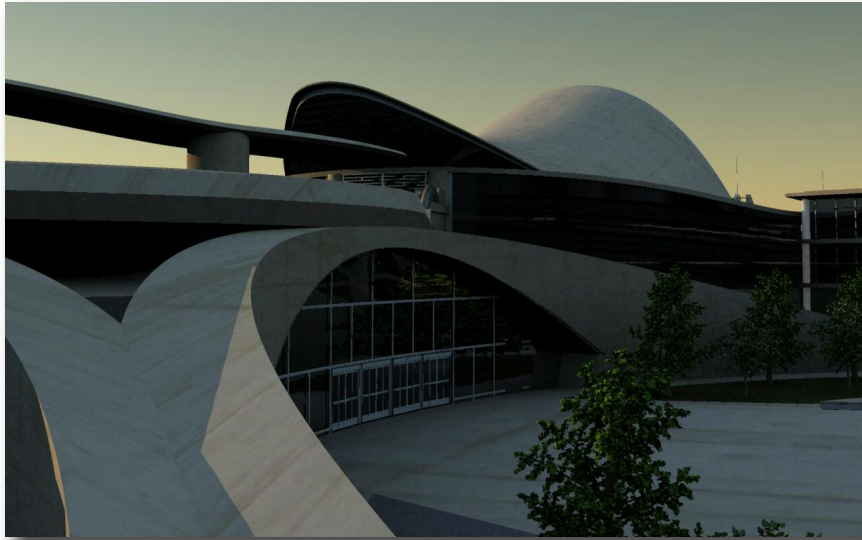
- a cathartic performing arts spectacle and reinterpretation of The Orpheus Myth — adapted to the twenty-first century
- live, multimedia expressions of artistic and musical performances on stage and screen, leveraging state-of-the-art visual and audio components
- an evolution of two- to three-hour sessions, presented over several days



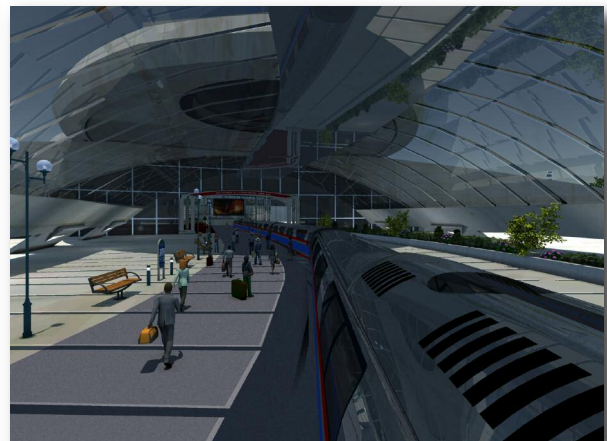
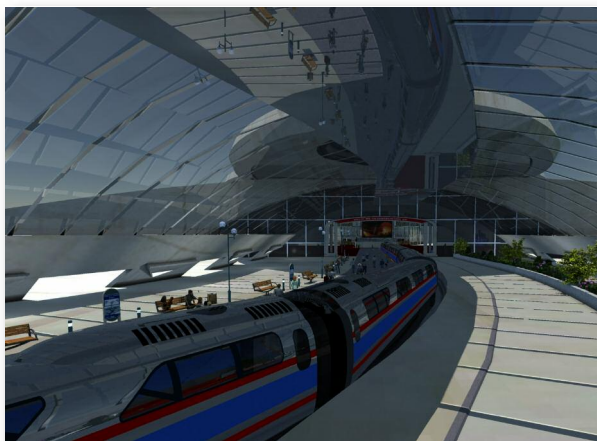
Shielding visitors from the stress and distractions of urban life during their stay, the Orpheus Center is situated in a peaceful, unpolluted setting amidst the scenic countryside.

Incorporating sustainable, energy-efficient materials that harmonize with a bucolic environment, the center is constructed and equipped with assistive technologies that offer enhanced accessibility for all.





Transport is facilitated via a Maglev (magnetic levitation) train shuttle that connects with an international airport and other public transport infrastructure within 50 miles of the facility.



Automated walkways, shuttles, and electric transport vehicles bridge the distance between the Orpheus Center and its healthcare and hotel accommodations.

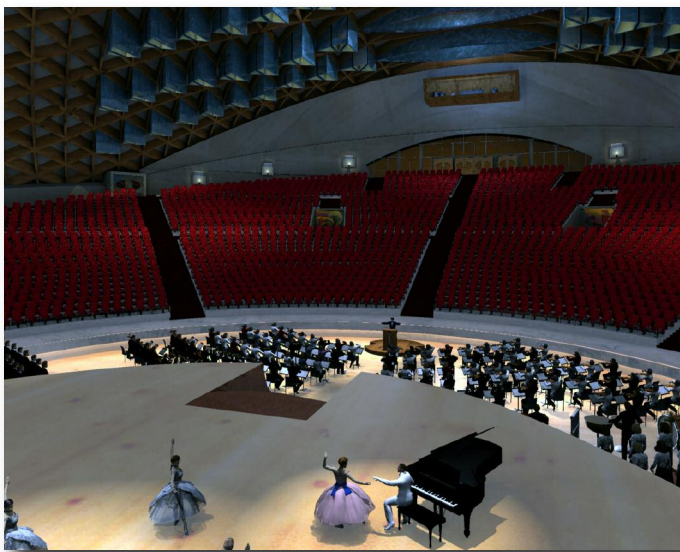


## AMPHITHEATER

Comprising 757,900 square feet with a 3,000-seat capacity, the amphitheater meets and exceeds expectations for a modern, multimedia facility. Equipped with superior acoustics, production, and projection technologies, the amphitheatre includes a 9,000 square foot stage — spacious enough for up to 60 performers, an 80-piece orchestra, and chorus on both sides of the stage.



Visual and film effects are projected on several sizeable, strategically placed screens that visually captivate spectators from all sides. Audience immersion is enhanced by a shell-shaped dome that draws spectators into the drama of the music and live performances.



The amphitheater includes all services typical to large performing arts venues—including talent green room, dressing rooms, rehearsal spaces, control booths, recording studios, production departments, administrative offices, audience lobbies, concessions, and dining areas.

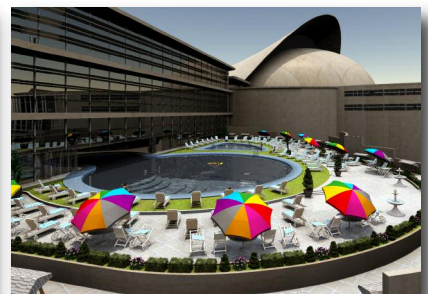
The amphitheatre shall also serve as a platform where other artists can express the treasures of their cultural heritages — from a spectacular new scenic perspective. As a crossroads of exchange for artists from around the world, the center shall welcome and embrace new works that support and advance this mission.



## THE RESOURCE & HEALTHCARE FACILITIES

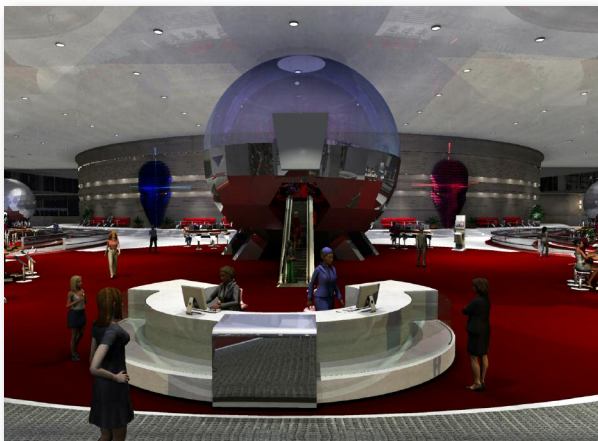
For those who desire, the Orpheus Center offers professional preparation, treatment, and follow-up customized to enhance individual experiences generated by the spectacle. Visitors are able to relax between sessions and consult with on-site practitioners who offer guidance, support, and other high-quality therapeutic approaches—all of which release tension in the body and revitalize the mind.

**CARE OF THE BODY** blends balneotherapy, spas, sub-aquatic music, chromotherapy, aromatherapy, heliotherapy, nutritional center, and other quality spas services and treatments.



Within the Body and Mind Enlightenment Arena, practitioners take a sensitive, non-invasive approach to offering specific body-and-mind care that respects the emotional, psychological, and physical needs of every individual. Guidance includes information, education, and coaching to help individuals sustain a relaxed, centered perspective at all times.

**AN INFORMATION AND ENLIGHTENMENT AREA** facilitates the transition from care of the body to aspects of the spirit (sensorial neurophysiology, proprioception, coenesthesia, kinaesthesia, and other sensations).



Educational programming is also presented via computer monitor stations, and discovery spheres. Advanced computer technologies demonstrate how audio and visual stimuli reach midbrain territories, thereby influencing auditory and visual responses, and motor functions.

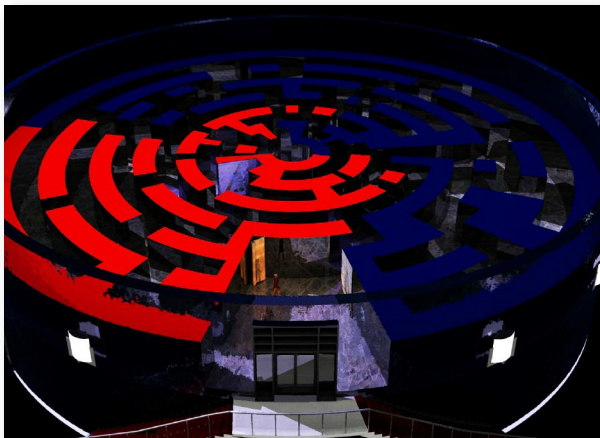
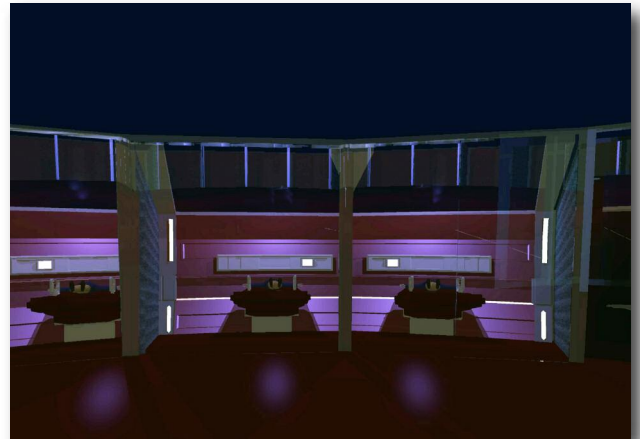


**CARE OF THE MIND** offers workshops, support groups, analysis, and experiences that empower individuals to comprehend deeper layers of consciousness that lead to greater personal insight.

Graphic and corporeal expression under musical induction,  
to overcome repressed issues.



Dream analysis, relaxation, meditation, hypnosis, labyrinths,  
symbolic journeys, and other forms of self-discovery



## ACCOMMODATIONS

Accommodations zones include restaurants, recreation and leisure facilities (including parks and pools), and shopping boutiques. Several artificial lakes provide access to beaches, hiking, biking, meditative trails, and relaxation gardens.

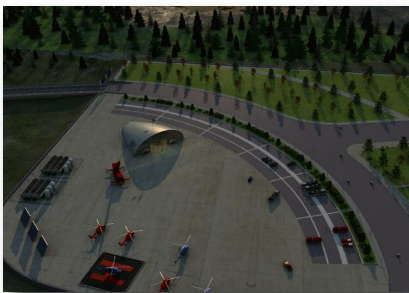
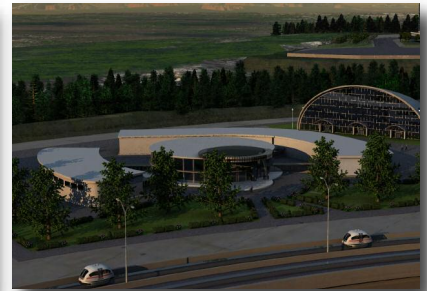


- Amenities within the accommodations zone include high-speed Internet and wireless communications
- Automated shuttle busses and electric vans facilitate transport between hotels and the Orpheus Center
- Meals are prepared on site under direction of chefs and dietitians who oversee nutritional needs for the venues



## GENERAL SERVICES

- Emergency response center comprising First Aid field hospital and rescue helicopters
- Strategic security services to assure safety for visitors and staff
- Centralized management and administration
- Satellite communication for research and broadcasting the shows
- Reserved intranet for visitor access to comprehensive information on all treatment fields offered
- Private Intranet access for all medical and administrative documents
- Education and research compiled for Orpheus Center specialties
- Studios and workshops for creative research
- Construction and maintenance services with shops and supplies to maintain natural environment
- Energy station for production and distribution of electrical and thermal energies
- Renewable energies specific to the site, including rainwater harvesting and grey water systems



## LAND REQUIREMENTS

- Building site — 130 ha. for about 3 billion square feet of developed surface
- Protected areas around the site — to be defined specific to the natural environment



## ESTIMATES AND STUDIES

### Total estimated building and equipment cost

- \$2 billion USD (not including train access and land cost)

### Current investment as of 2011

- \$17,900,000 USD

### Basic studies available

#### *Musical creations*

- Composition and preparation of the musical themes
- Recording of the first six themes of the show at Abbey Road Studio. Performed by the London Symphony Orchestra and the London Voices (95-piece orchestra & 40-member choir)

#### *Music-therapy applications*

- Primary research on effects of musical catharsis and music created for the show
- Fine tuning of Catharsis Technique—a psycho-musical technique combining programmatic music and graphic expression—and Catharsis Application Program (CAP)
- Training of therapists in the US, France, and Switzerland, at psychiatric clinics, rest homes, rehabilitation centers, and hospitals specializing in geriatrics and Alzheimer's

#### *Preparation of the multimedia experience*

- 150 artistic sketches of the primary theatrical scenes
- Selection of musical themes and determination of placement in show

#### *Architectural pilot-study of the center*

- Set of plans at scale of 1:500 and 1:1000, preliminary technical studies and cost estimate
- 3D model of the central multimedia amphitheater and the two healthcare wings
- 3D slide-show presentation of The Orpheus Center

### Studies to complete

#### *Preparation of the Multimedia Experience:*

- Completion of the preliminary draft of the screenplay
- Realization of a short 3D film to synopsise the multimedia experience

#### *Architectural pilot-study of the Center:*

- 3D editing of slide-show presentation (additional voice-over and soundtrack) leveraging expertise of American marketing consultant

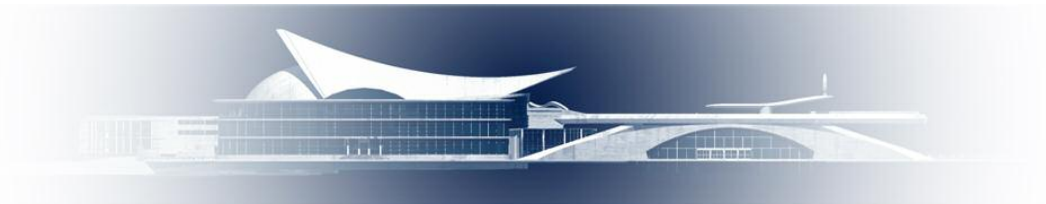


# *CAPITAL AND EQUITY REQUIREMENTS*

## **Current development strategy and initiatives**

- Establish Los Angeles-based operational center for studies and promotion to be developed
- Complete audio-3D visual presentation of Orpheus Center, targeted for potential investors
- Complete presentation of Orpheus Experience project
- Consult internationally known firms with expertise in organizing and financing similar endeavors
- Commission technical and economic feasibility study to explore and further develop all aspects of the project, including:
  - geographical implementation
  - architectural studies
  - energy and security controls
  - multimedia systems offering audio and visual total immersion
  - hotel planning and organization
  - spas design
  - healthcare researches and management
- Select qualified marketing consultancy to function as driving force (one who is able to comprehend and appreciate the 35-years of preparation yet concisely present the project to potential investors via the following and other mediums:
  - web site
  - newsletters
  - publications and journals
  - professional networking
  - conferences and meetings
  - tradeshow and showcases
- Assemble creative crew for medical, artistic and technical collaboration on music, choreography, film, avant-garde scenography, and other artistic elements.

**The risk capital funds required, and the responsibility repartition for this preparation phase of circa two years duration must be determined with project promoters.**



## MEET THE TEAM !



**SILCORD US PRODUCTIONS**  
10880 Wilshire Blvd, Ste #920,  
Los Angeles, CA 90024 - 4101

Phone: (310) 475 9700  
Fax: (310) 475 3397

email: [contact@theorpheusproject.org](mailto:contact@theorpheusproject.org)

